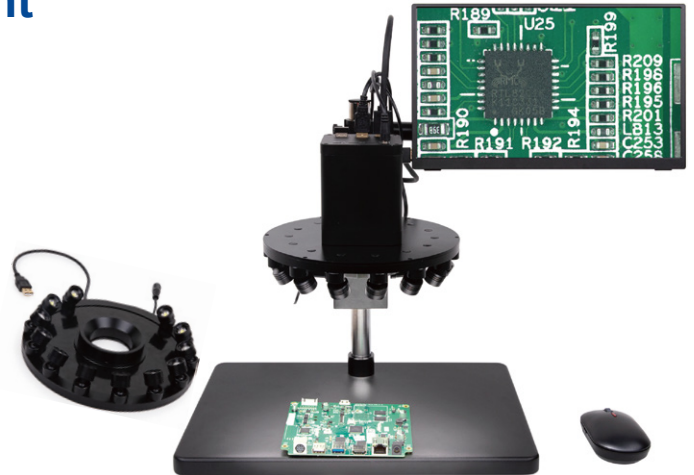


## AALRL-200-7650 Angle Adjustable LED Ring Light

- Twelve 1 watt LED located on a 202 mm circle
- LED intensity controllable with USB port(AFDM series)
- Single LED on/off switch
- Single LED illumination angle adjustable(left or right 30 degree)
- Power input 12V/2A
- Large FOV(300mm diameter)
- Providing intense and focused shadow-free illumination
- For microscope stand with 75mm diameter bracket
- For monocular zoom object /AFDM with 50mm adaptor



### Light Source Introduction

The AALRL-200-7650 LED Ring Light is a high-performance lighting device with a unique adjustable angle feature. The ring light consists of a top cover, driver circuit board, LED module mounting ring, multiple LED modules, and a mounting base, arranged from top to bottom. The LED modules can rotate axially, allowing flexible adjustment of the illumination angle (0-30° in any direction), making it suitable for a wider range of applications. The LED modules are connected to the driver circuit board via wires, ensuring stable power supply and efficient operation.

The AALRL-200-7650 LED Ring Light features a compact design and easy installation, making it ideal for precise illumination in various industrial and scientific fields, as well as for applications requiring large field of view and high uniformity.

